

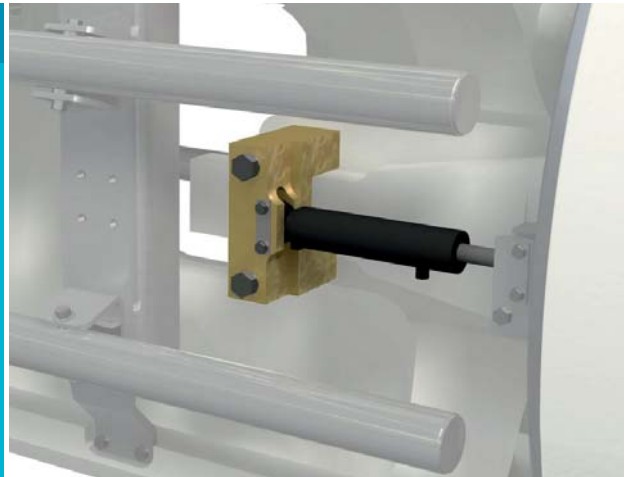
SymBelt Roll Upgrade Package

Head guides

Head guides reduce the risk of "stick'n slip" at the roll heads.

Benefits

- Extended SymBelt roll belt lives
- Reduces risk of excessive wear and premature belt failure



Description

The SymBelt roll belt is mounted on the rotating roll heads. Hydraulic cylinders inside the roll push the roll heads in the cross-machine direction, thereby moving the roll heads and stretching the belt.

The head guide upgrade improves the sliding of the roll heads in the cross-machine direction. The new head guide reduces the risk of "stick'n slip" action on the roll head/journal and head guide/steering arm slide surfaces.

Upgrade package contents

- 4 head guides
- 4 machine-direction guide plates
- Mounting hardware
- Installation and startup

